

EURO LPG VI series



STANDARD SPECIFICATIONS

Construction:

Frame: Galvanised carbon steel; double coated painting
Housing: Stainless steel
Panels: Aluminium; double coated painting

LPG Meter:

4-piston positive displacement
Accuracy: Better than $\pm 0,5\%$

LPG Filter:

20 μ m mesh filter

LPG Hose:

Black 3/4" NPT

LPG Nozzle:

Suitable for International Markets coupling

Fuel Meter:

4 pistons type positive displacement double-action
Accuracy: $\pm 0,2\%$

Fuel Filter:

Stainless steel, reusable, 100 μ m mesh filter easy to clean

Fuel Hose:

5/8", 3/4" or 1" or according to EN 1360 with textile reinforcement

Fuel Nozzle:

Automatic nozzle ZVA slimline

Fuel Motor:

Flame proof Motor single or three phases,
50/60 Hz with built in thermal protection

Fuel Suction pump:

Monoblock, with gas separator and non-return valve

Calculator:

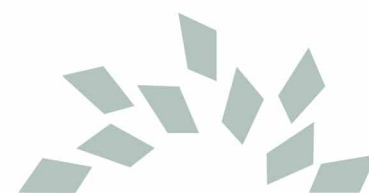
CEM or DISCO

Protocols:

Petrotec, Pulse Interface, IFSF-LON, ER3, G, Others

OPTIONS :

- DISPENSER / SUBMERGE
- 90 OR 130 L/MINUTE FLOW RATE
- SPEED SELECTION (50/90 L/MINUTE)
- SINGLE PHASE SUPPLY
- VOLUME OR PRICE PRESETTING
- BREAKAWAY IN THE NOZZLE OR HOSE
- COLOUR HOSES AND SLEEVES
- CUSTOMISED PAINTED PANELS
- INTERFACES TO OTHER EQUIPMENT
- SATELLITE
- CIRCUIT BREAKERS IN THE EQUIPMENT
- VAPOUR RECOVERY
- VAPOUR RECOVERY MONITORING SYSTEM
- FLEXIBLE PIPE
- ELECTRONICS HEATER
- VOICE MODULE
- FOUNDATION FRAMES
- MULTIMEDIA OPT
- TAG READER



Petrotec



EURO LPG VI series

RETAIL LINE

For fuel retail either attended or self-service mode, the Euro LPG VI series was conceived in order to associate the effectiveness and the safety when refuelling LPG. While the Euro 2000 LPG VI combines flexibility and precision in a very compact design, the Euro 5000 LPG VI offers different types of fuel together with LPG, enabling the space optimization of the pump in an attractive and lean design.



Petrotec

Headquarters

Parque Industrial de Guimarães, Pav. C2 / S. João de Ponte - 4805-661 GUIMARÃES - PORTUGAL

P. (+351) 253 479 300 F. (+351) 253 479 318

isd@petrotec.pt | www.petrotec.pt

Petrotec is continuously improving its products. Changes on the specifications may occur without prior notice.

PETROTEC MARKETING TEAM 2008



MEMBER
PEI
EUROPEAN PETROLEUM EQUIPMENT INSTITUTE

C.E.C.O.D.
COMITÉ EUROPÉEN DE MANUFACTURIERS
DE PÉTROLE ET D'ÉQUIPEMENT





EURO LPG VI series

In one of the most important economy sectors, Petrotec Group is one of its greatest references, due to the fact that it is one of the five largest manufacturers of the world, concerning the equipments to the oil industry distribution and retail, and the only one offering global solutions.

It has achieved its status and prestige on its own with no further than two decades of activity. With more than four hundred co-workers and several branches operating in four continents, Petrotec Group has been standing out not only due to its dynamics in a sector which is known by its high competitiveness, but also by the high satisfaction of its clients.

Petrotec Group is proud of belonging, for more than a decade, to the restrict group of manufacturers whose technology is 100 per cent their own, which reflects the technology potential of its research and development departments. It is also important to refer that all the activities are certificated according to the ISO 9001 and ISO 14001 standards.

Petrotec Group's current activity consists of fuel and LPG pumps production, research and development of hardware and software solutions, especially conceived or adapted to each client's specific needs, management and control systems in filling stations, car wash equipments, environmental solutions and maintenance services.

The largest petrol companies of the world are some of Petrotec Group's clients, which has brought to it great pride and prestige. The aims are not only to consolidate but mainly to strengthen the already excellent position Petrotec Group occupies in the market. Thus it is trying to enlarge the distribution network as well as to develop partnerships in new markets.

EURO LPG VI series

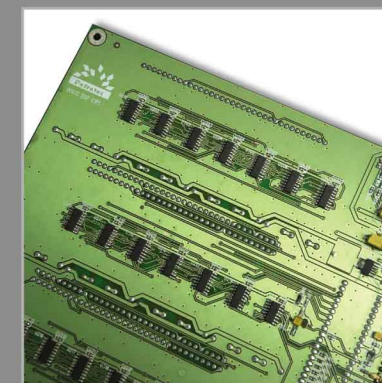
In a market whose main characteristics are the extreme competitiveness and demand, excellence is not a mere luxury, but an obligation. It was in this context that the new Petrotec Euro LPG VI series was born.

EURO 2000 LPG VI was developed to serve conventional LPG selling and distribution places, in either single or double versions. It can easily be adapted to the most revolutionary self-service systems, and it can be integrated in a group where it coexists with electronic probes, card payment terminals, back-office systems, price signs, etc.

EURO 5000 LPG VI production lies in a modular multiproduct concept, which allows the distribution of up to five types of fuel per refuelling position, including LPG. The pump controller is highly precise and allows a clear visualization. An automatic system of hoses retraction is integrated in the pump and provides that the hoses are safely stored after usage. This way the process is more attractive to the customers.

This wide range of characteristics allows EURO LPG VI series to have a longer life cycle, and consequently a higher profitability to the business. The internal organs disposition was made aiming the effectiveness, by allowing quick servicing.

However, the highest quality manufacture standards can be also seen on the outside, since the EURO LPG VI series technology is protected by a hermetic stainless steel outer covering, which guarantees its performance against the hardest environmental conditions.



CEM or DISCO Calculator

The Calculator is the electronic heart of VI series retail line pumps. Due to its modular conception and high industrial technology, it achieves high levels of reliability and flexibility. The software is conceived on IFSF data model and others, which allows its configuration and usage in every country.

- It controls 2 filling positions up to 4 displays;
- It controls up to 10 hoses and 5 products, including LPG;
- Value or volume presetting 5-key keyboard (numerical 12-key keyboard optional);
- Configuration from console or presetting keyboard;
- Electronic and electromechanical totalizer for each hose;
- Monitoring of motor thermal protection and valve operation;
- Internal self-diagnosis;
- Data retention in EPROM for security.

ELECTRONICS

- Voice module (optional);
- Electronics heating with thermostat (optional);
- Price programming through physical key;
- Ability to operate in stand-alone and/or self-service, connected to the filling station managing system (Mycrosys, Genesys or others);
- Backup battery.

LPG METER

As the most vital part in an LPG dispensing unit, LPG flow meter can easily work under pressure. This meter is designed to comply with the dispensing requirements demanded by the industry. The 4-piston type positive displacement meter has a high accuracy over a large flow range.

TECHNICAL SPECIFICATIONS

- Connection Size
 - Liquid inlet: 3/4" NPT
 - Vapour return line: 3/4" NPT
- Pressure gauge: 1/4" NPT
- Flow Rate
 - Recommended Minimum: 6 L/Minute
 - Recommended Maximum: 60 L/Minute
- Accuracy: $\pm 0,5 \%$
- Pressure rating: 25 bar
- Maximum Working Pressure: 40 bar
- Operational Temperature
 - Recommended Minimum Temperature: -40°C
 - Recommended Maximum Temperature: $+60^{\circ}\text{C}$
- Safety relief valve opening pressure: 14 bar

EURO LPG VI series